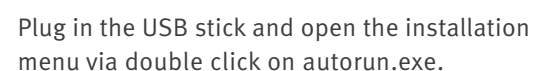
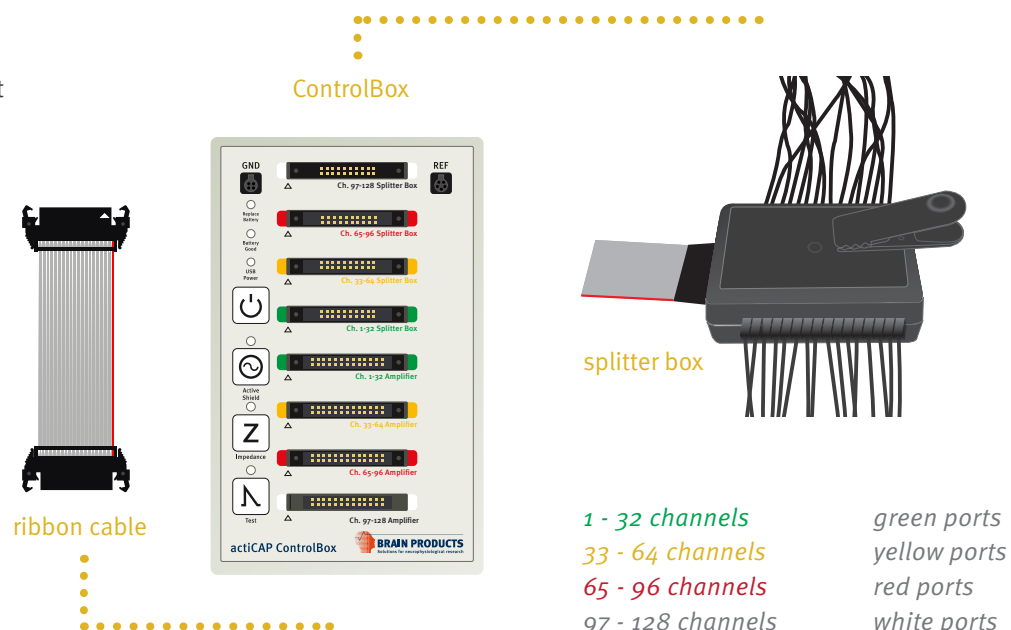


Installing the actiCAP software:

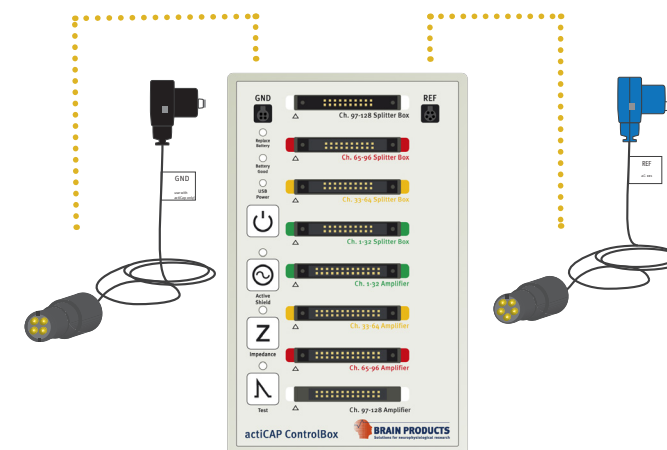


Important: Please make sure to respect the physical channel order when connecting electrode sets. Before connecting or disconnecting any electrode set (step 2 and 3) make sure that the actiCAP ControlBox is switched OFF.

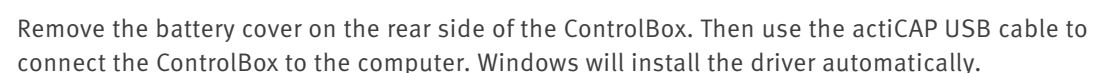
Use the flat ribbon cable to connect the actiCAP ControlBox to the amplifier. Then connect each splitter box to the correspondent connector on the ControlBox.



Connect the GND and REF electrode to the ControlBox



Installation of the actiCAP drivers



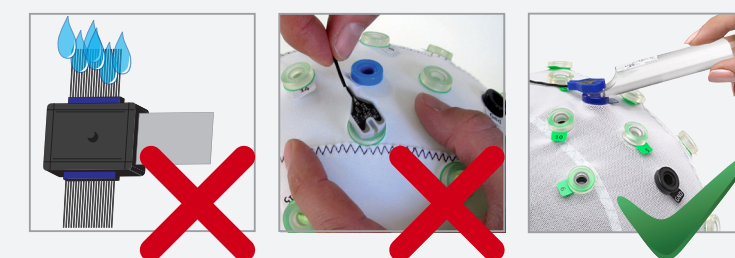
How to prepare 64 actiCAP electrodes in 10 minutes:

- I. Inject the gel starting with the GND and REF channels
- II. Gently rub the skin by rotating the syringe a few times. This rotation spreads the gel evenly over the skin and increases the contact area to a sufficient degree.

Warnings:

1 The splitter box must not come into contact with water.

2 Do not pull the cables when removing the electrodes from the cap. Use the actiCAP removal tool to remove the electrodes from the holder.



Set Up Your actiCAP



Version 009 11/2017
© Brain Products GmbH

Worldwide Caution:
Our products are scientific equipment
for INVESTIGATIONAL USE ONLY!
Medical use e.g. for diagnosis, treatment of disease
or other such purposes is strictly forbidden.

Brain Products GmbH
Zeppelinstrasse 7
82205 Gilching
Germany
T +49 (0) 8105 733 84 0
F +49 (0) 8105 733 84 505
sales@brainproducts.com